


TJB GELBIEH  
**BULL SALE**

**11.03.18**

CHICKAMAUGA, GA | 1PM EST



## WELCOME TO TJB GELBIEH:

My daughter Katelyn sent me a link recently to the Paul Harvey "So God Made A Farmer" commercial that Dodge trucks aired in the 2014 Super Bowl. They had discussed it in class that day, and she encouraged me to watch it, knowing I had seen it before. "Why not take a quick look," I thought. Maybe it is my "advanced maturity," but the video brought tears to my eyes, more so than the first time I saw it. Memories of my childhood, growing up with my dad and my grandfather in rural America flooded my mind. It quickly became clear to me truly how lucky I was to be born in the environment Paul Harvey so eloquently and accurately describes. Immediately, I gave thanks to God that I am here today working countless hours doing exactly what I love doing and exposing my family to the lifestyle.

How many of us at times become very discouraged with our work hours or our financial struggles, wishing things were somehow different? It is so easy, especially in today's society, to forget the graces given to each of us, each and every day. Shortly thereafter viewing, I found a cow down on the farm struggling in delivery after a precarious positioning amongst some tree roots. She was partially cast and needed assistance. I was able to hand pull the calf, but his head was swollen and he had a hard time getting started. I rubbed and massaged the calf and prayed for a deep breath to no avail. I don't know if I really helped, but the best oxygen support I could offer was blowing air into his nostrils. Lo and behold, he lived and what satisfaction! Once again, "So God Made A Farmer" came to mind.

I really do not know why I felt so compelled to make this concept my letter for this year. It was an immediate

revelation, so here it is, regurgitated into the catalog. We are involved in a different world today than we have ever been confronted. It is imperative that we, as beef producers, portray our true image as caring, compassionate people that are passionate about producing a safe and healthy product. We are not only small in numbers, but we also continue to increase a generation removed from the farm. We learned work ethic, life and death, sadness and exhilaration, and most importantly, we learned the value of family and God. Graciously, I must say, I am thrilled that God made me a farmer! I encourage you to grab a tissue and watch Paul Harvey, whether it is your first time or your fifth. Visit [tjbgelbvieh.com](http://tjbgelbvieh.com) to view "So God Made A Farmer" and locate the commercial script on Page 12.

*"It is imperative that we, as beef producers, portray our true image as caring, compassionate people that are passionate about producing a safe and healthy product."*

Although some things change, some things remain the same. At TJB Gelbvieh, our commitment to producing outstanding bulls that will be an asset to the beef industry is unwavering. We continue to put pressure on our most elite cow herd to perform in a real environment. They must calve easily, breed back for a 60-day calving season, wean a desirable calf and do so without sacrificing udder quality, structural soundness and disposition.

We hope to see you on November 3rd. As always, please consider spending time with us on Friday and Saturday night. We would love to share with you our best in Southern Hospitality!

Sincerely,

*Todd J. Bickett*

Todd J. Bickett DVM  
TJB Gelbvieh

## WEEKEND SCHEDULE

FRIDAY, NOVEMBER 2<sup>ND</sup>  
3:00 PM - DARK  
Cattle Available for Viewing

6:00 PM  
Dinner & Hospitality

SATURDAY, NOVEMBER 3<sup>RD</sup>  
12:00 NOON  
Lunch Available

1:00 PM  
TJB Gelbvieh 7<sup>th</sup> Annual Bull Sale  
*Stick around to visit and relax after the sale!*

## SALE INFORMATION

SALE LOCATION: TJB Gelbvieh  
455 Brotherton Lane Chickamauga, GA 30707

SALE DAY PHONES  
Todd J. Bickett, DVM (423) 667-3799  
Alisa Bickett (423) 991-8597

AUCTIONEER  
Dale Stith

RINGMEN  
Luke Mobley, Mike Ryan, Paul Wall

NATIONAL ANTHEM  
Sung by Julie Merendino

SALE BROADCAST  
Cattle In Motion, [cattleinmotion.com](http://cattleinmotion.com)

HERD HEALTH  
All bulls will be accompanied by a valid health certificate for immediate shipment anywhere within the continental United States. Bulls over 1 year of age will be accompanied with a satisfactory BSE. Bulls under 1 year of age without a satisfactory BSE will sell as guaranteed breeders.

SUPPLEMENTAL INFORMATION  
Any catalog updates will be available on the supplement sheet. Supplement sheets and announcements from the block take precedence over the sale book.

TRUCKING  
Visit with TJB Gelbvieh if you need to make arrangements.

VIDEOS  
Visit [www.tjbgelbvieh.com](http://www.tjbgelbvieh.com) for available bull videos.

PHOTOS  
Chris Mitchell, [www.mms.bz](http://www.mms.bz)  
Tommy and Kim Coley

LIABILITY  
All persons attending the sale do so at their own risk. TJB Gelbvieh does not accept any responsibility.

TERMS & CONDITIONS  
All bulls will sell under the standard terms and conditions recommended by the American Gelbvieh Association (AGA). A copy of these can be obtained from the AGA. TJB Gelbvieh retains 1/3 semen interest on all bulls selling.

WEBSITE & PROMOTION  
Laura Sutherly, Agtivation, [www.agtivation.com](http://www.agtivation.com)

CATALOG & SOCIAL MEDIA  
Kelsie Bickett, [kr.bickett@gmail.com](mailto:kr.bickett@gmail.com), Email for inquiries.



# It's a FAMILY THING

7<sup>TH</sup> ANNUAL BULL SALE  
SATURDAY, NOV. 3, 2018  
1:00 EST | TJB GELBVIEH | CHICKAMAUGA, GA



## MEET THE TEAM

Dr. Todd, Alisa, Kelsie & Katelyn Bickett  
Owners & Operators of TJB Gelbvieh  
(423) 667-3799, [todd@bickettgenetics.com](mailto:todd@bickettgenetics.com)

Russell Edwards  
Monte Buckles  
Farm Crew



## CATTLE IN MOTION

This sale will be broadcast live at:  
[WWW.CATTLEINMOTION.COM](http://WWW.CATTLEINMOTION.COM)

To view and bid on this sale live, simply log on to [www.cattleinmotion.com](http://www.cattleinmotion.com) and click on the sale that will be listed on the right hand side of the screen. If you have never been to the CIM site, you must first create an account (24 hours in advance) to view and bid on a sale. Then pay your \$1 lifetime verification if you wish to bid.



LIVE AUDIO. LIVE BIDDING  
LIVE BROADCAST



Questions and Concerns Please Call - 888-554-VIDE (18437)

# FOUNDATION Cow Families

*Anissa Family*



Lots 1-8, 15-27

*Velvet Family*



Lots 9-11, 51-55

*Blackcap Family*



Lots 12-13, 42-44

*Vanessa Family*



Lots 14, 45-50

*Blackbird Family*



Lots 28-35

*Granite Family*



Lots 36-41

*Erica Family*



Lots 56, 57

*408P Family*



Lot 58

*Joy Family*



Lot 59

Gelbvieh and Balancer® Breed Average EPDS (For non-parents, as of the Summer 2018 International Cattle Evaluation)

	Growth and Maternal EPDs										
	CED	BW	WW	YW	MK	TM	CEM	HP	PG30	ST	
Gelbvieh	12	0.9	63	91	25	56	5	5	1	15	
Balancer®	13	0.2	64	96	23	55	6	5	1	15	
	Intake and Carcass EPDs							Index Values			
	DMI	YG	CW	RE	MB	FT	ADG	RFI	\$Cow	FPI	EPI
Gelbvieh	-0.002	-0.45	8	0.70	0.04	-0.09	-0.036	-0.011	109.62	68.00	71.01
Balancer®	0.022	-0.19	19	0.51	0.30	-0.03	0.018	-0.006	105.58	74.95	109.08



## HYBRID VIGOR WITH THE *Maternal Advantage*

TJB Gelbvieh is a family-owned and -operated farm with a focus on superior genetics and an emphasis on customer satisfaction. We strive diligently to produce elite bulls and females that will increase profitability for the commercial cattle industry and other seedstock producers. Our entire program evolves around the female. We believe as a breed we truly are the most maternal of all Continental breeds today. Stacking dominant females in the pedigrees for multiple generations provides us with the consistency we think necessary to be genetic providers not genetic multipliers. TJB Gelbvieh has focused on cow families in a structured breeding program for thirty years. Our herd emphasis has been fertility and longevity generated from a moderate framed, deep-bodied female that stems from a superior individual.

Due to circumstances beyond our control, the Genomic Enhanced EPDs were not available at publication time. To ensure the accuracies of our genomics were maximized, there was some recalculation of the process which created down time for the EPD run after our genomic testing occurred. There will be a supplement sheet available sale day. All animals were tested for color status.





# Get ready for the BIG SHOW!

## 1 TJB 921U BIG SHOW 6123E ET

Homo Polled | Homo Black | BA63

DOB: 2/5/2017

AGA#: 1407956

TATTOO: 6123E

XXB BIG N' RICH 911P ET

**TJB BIG SHOW 001W**

TJB BLACKCAP B042 823T ET

B C LOOKOUT 7024

**TJB ANISSA 921U-ET ET**

TJB ANISSA 337M ET

BW	85
WW	575
YW	1146
SC	

Growth & Maternal EDPs

CED	BW	WW	YW	MK	TM	CEM	HP	PG30	ST
14.7	-1	54	79	26	52	8	1.29	1.71	14.1

Intake & Carcass EDPs

DMI	YG	CW	REA	MB	SCOW	FPI	EPI
0.018	-0.25	16	0.59	0.16	94.34	67.63	77.9

Leading off the sale this year will be two flushmate brothers by 921U sired by our own "Big Show" (Son of 823T). True to the TJB philosophy, the more great females in a pedigree increase the chances for consistency. 921U has been a stalwart in the Anissa family and we are now flushing the 7th generation female. We have two full sisters to these bulls, one of which calved last year and had one of our very best heifer calves and the one this year is probably the best individual in the open heifers. These powerful and attractive bulls will be outcross to most pedigrees today. You will love the completeness and soundness of these bulls.

## 2 TJB 921U BIG SHOW 6124E ET

Homo Polled | Black(RC) | BA63

DOB: 2/1/2017

AGA#: 1407957

TATTOO: 6124E

XXB BIG N' RICH 911P ET

**TJB BIG SHOW 001W**

TJB BLACKCAP B042 823T ET

B C LOOKOUT 7024

**TJB ANISSA 921U-ET ET**

TJB ANISSA 337M ET

BW	80
WW	678
YW	1236
SC	

Growth & Maternal EDPs

CED	BW	WW	YW	MK	TM	CEM	HP	PG30	ST
14.7	-1	54	79	26	52	8	1.29	1.71	14.1

Intake & Carcass EDPs

DMI	YG	CW	REA	MB	SCOW	FPI	EPI
0.018	-0.25	16	0.59	0.16	94.34	67.63	77.9

921U BIG SHOW 6123E | LOT 1



921U BIG SHOW 61234 | LOT 2



921U LIFELINE 6125E | LOT 3



## 3 TJB 921U LIFELINE 6125E ET

Homo Polled | Homo Black | BA50

DOB: 1/30/2017

AGA#: 1407958

TATTOO: 6125E

S A V FINAL ANSWER 0035

**EGL EGL LIFELINE B101**

EGL ESTELLE X014

B C LOOKOUT 7024

**TJB ANISSA 921U-ET ET**

TJB ANISSA 337M ET

BW	80
WW	625
YW	1105
SC	

Growth & Maternal EDPs

CED	BW	WW	YW	MK	TM	CEM	HP	PG30	ST
17.3	-1.3	62	91	22	53	8	1.65	2.11	13.3

Intake & Carcass EDPs

DMI	YG	CW	REA	MB	SCOW	FPI	EPI
0.026	-0.25	15	0.58	0.16	92.14	73.3	104.22

I think you will appreciate the type and kind of all these 921U sons. The numbers won't excite you but blame that on New Day in the pedigree. Buy these sons knowing she has produced the right kind of bulls of all types. Lifeline was NWSS National Champion Balancer bull and is highlighted in programs all around the country.

# 4 TJB 921U LIFELINE 6126E ET

Homo Polled | Homo Black | BA50

DOB: 1/25/2017

AGA#: 1407939

TATTOO: 6126E

S A V FINAL ANSWER 0035  
**EGL EGL LIFELINE B101**  
 EGL ESTELLE X014  
 B C LOOKOUT 7024  
**TJB ANISSA 921U-ET ET**  
 TJB ANISSA 337M ET

BW	85
WW	535
YW	1015
SC	

Growth & Maternal EDPs

CED	BW	WW	YW	MK	TM	CEM	HP	PG30	ST
17.3	-1.3	62	91	22	53	8	1.65	2.11	13.3

Intake & Carcass EDPs

Index Values

DMI	YG	CW	REA	MB	\$COW	FPI	EPI
0.026	-0.25	15	0.58	0.16	92.14	73.3	104.22



921U LIFELINE 6126E | LOT 4

# 5 TJB 921U OUTRIGHT 6127E ET

Homo Polled | Black | BA50

DOB: 2/3/2017

AGA#: 1407960

TATTOO: 6127E

CONNELLY CONSENSUS 7229  
**TAU OUTRIGHT 162A**  
 TAU GUNNISON 5151R  
 B C LOOKOUT 7024  
**TJB ANISSA 921U-ET ET**  
 TJB ANISSA 337M ET

BW	80
WW	658
YW	1380
SC	

Growth & Maternal EDPs

CED	BW	WW	YW	MK	TM	CEM	HP	PG30	ST
15.4	-0.2	60	95	23	53	7	2.32	2.62	15.5

Intake & Carcass EDPs

Index Values

DMI	YG	CW	REA	MB	\$COW	FPI	EPI
0.016	-0.23	28	0.76	0.44	105.77	77.83	109.68



149X FI 6116E | LOT 6

# 6 TJB 149X FI 6116E ET

Double Polled | Black(RC) | PB88

DOB: 1/25/2017

AGA#: 1407949

TATTOO: 6116E

HYEK BLACK IMPACT 3960N  
**CIBS FIRST IMPRESSION**  
 HYEK KIZZY 1521L  
 DCH HILLE M118 MAJESTY  
**TJB TJB ANISSA 913U 149X**  
 TJB ANISSA 913U-ET ET

BW	75
WW	569
YW	970
SC	

Growth & Maternal EDPs

CED	BW	WW	YW	MK	TM	CEM	HP	PG30	ST
14.3	-0.5	62	89	29	60	6	0.5	-0.77	15.9

Intake & Carcass EDPs

Index Values

DMI	YG	CW	REA	MB	\$COW	FPI	EPI
0.005	-0.42	2	0.67	0.02	103.31	69.5	76.57

149X has become one of our preeminent donors. You will see her influence in these coming two year olds as well as the phenomenal Masterpiece sons in the yearling group. I challenge you to find a fault in this donor or these bulls.



ANISSA FAMILY



Power female is also the dam of featured Lots 15-19!

Chris Mitchell



149X FI 6117E | LOT 7

TC



149X FI 6118E | LOT 8

TC

**7 TJB 149X FI 6117E ET**  
Double Polled | Black(RC) | PB88

DOB: 1/27/2017  
AGA#: 1407950  
TATTOO: 6117E

HYEK BLACK IMPACT 3960N  
**CIBS FIRST IMPRESSION**  
HYEK KIZZY 1521L  
DCH HILLE M118 MAJESTY  
**TJB TJB ANISSA 913U 149X**  
TJB ANISSA 913U-ET ET

BW	75
WW	557
YW	1056
SC	

Growth & Maternal EPDs

CED	BW	WW	YW	MK	TM	CEM	HP	PG30	ST
14.3	-0.5	62	89	29	60	6	0.5	-0.77	15.9

Intake & Carcass EPDs

DMI	YG	CW	REA	MB	SCOW	FPI	EPI
0.005	-0.42	2	0.67	0.02	103.31	69.5	76.57

149X has become one of our preeminent donors. You will see her influence in these coming two year olds as well as the phenomenal Masterpiece sons in the yearling group. I challenge you to find a fault in this donor or these bulls.

**8 TJB 149X FI 6118E ET**  
Double Polled | Black(RC) | PB88

DOB: 1/27/2017  
AGA#: 1407951  
TATTOO: 6118E

HYEK BLACK IMPACT 3960N  
**CIBS FIRST IMPRESSION**  
HYEK KIZZY 1521L  
DCH HILLE M118 MAJESTY  
**TJB TJB ANISSA 913U 149X**  
TJB ANISSA 913U-ET ET

BW	75
WW	540
YW	1015
SC	

Growth & Maternal EPDs

CED	BW	WW	YW	MK	TM	CEM	HP	PG30	ST
14.3	-0.5	62	89	29	60	6	0.5	-0.77	15.9

Intake & Carcass EPDs

DMI	YG	CW	REA	MB	SCOW	FPI	EPI
0.005	-0.42	2	0.67	0.02	103.31	69.5	76.57

149X has become one of our preeminent donors. You will see her influence in these coming two year olds as well as the phenomenal Masterpiece sons in the yearling group. I challenge you to find a fault in this donor or these bulls.



*Calving Ease with Maternal Excellence!*

## 9 TJB 137X DERRINGER 6115E ET

Homo Polled | Homo Black | BA50

DOB: 1/27/2017

AGA#: 1407948

TATTOO: 6115E

TAU GUNSLINGER 19U

DJS DERRINGER 96X

MISS 004-76T

B C MATRIX 4132

TJB TJB VELVET 137X ET

TJB VELVET MOON 226M - ET

BW	70
WW	537
YW	993
SC	

Growth & Maternal EDPs

CED	BW	WW	YW	MK	TM	CEM	HP	PG30	ST
16.7	-2.6	49	69	19	44	9	2.71	1.12	20.6

Intake & Carcass EDPs

DMI	YG	CW	REA	MB	\$COW	FPI	EPI
	-0.18	12	0.4	-0.02		61.71	

WOW! This may well be the total standout in the older set of bulls. He is total calving ease with the tremendous asset of an unparalleled female, 137X. If you are looking for a heifer bull that will flat produce the keeper kind, pay attention to this guy. He can fit in at any level!



137X DERRINGER 6115E | LOT 9

TC

## 10 TJB 339Z HIGHMORE 6121E ET

Homo Polled | Homo Black | BA63

DOB: 2/5/2017

AGA#: 1407954

TATTOO: 6121E

JCGR BAR GT CROSS FIRE500W ET

VLK VLK A301 HIGHMORE

VLK 930W

SINCLAIR GRASS MASTER

TJB VELVET 339Z-ET

TJB VELVET MOON 226M - ET

BW	80
WW	598
YW	1192
SC	

Growth & Maternal EDPs

CED	BW	WW	YW	MK	TM	CEM	HP	PG30	ST
8.4	1.7	70	105	18	53	3	5.99	1.18	13.3

Intake & Carcass EDPs

DMI	YG	CW	REA	MB	\$COW	FPI	EPI
	-0.22	30	0.67	0.34		76.33	

339Z has been a great bull maker here and his females have been standouts with great show careers for the Rittenhouse family. This is a stout made bull ready to go breed lots of cows.



137X | DAM OF LOT 9

## 11 TJB 332X EXCLUSIVE 655D

Homo Polled | Black(RC) | BA75

DOB: 9/14/2016

AGA#: 1384073

TATTOO: 655D

DCSF POST ROCK SILVER 233U1

CCRO CAROLINA EXCLUSIVE 1230Y

CCRO MS C-CROSS EC / 7309T

B C MATRIX 4132

TJB VELVET 332Z-ET

TJB VELVET MOON 226M - ET

BW	83
WW	589
YW	944
SC	37.9

Growth & Maternal EDPs

CED	BW	WW	YW	MK	TM	CEM	HP	PG30	ST
7.8	1.8	69	103	19	54	3	10.37	1.72	23.1

Intake & Carcass EDPs

DMI	YG	CW	REA	MB	\$COW	FPI	EPI
0.035	-0.3	20	0.64	0.25	156.04	73.43	125

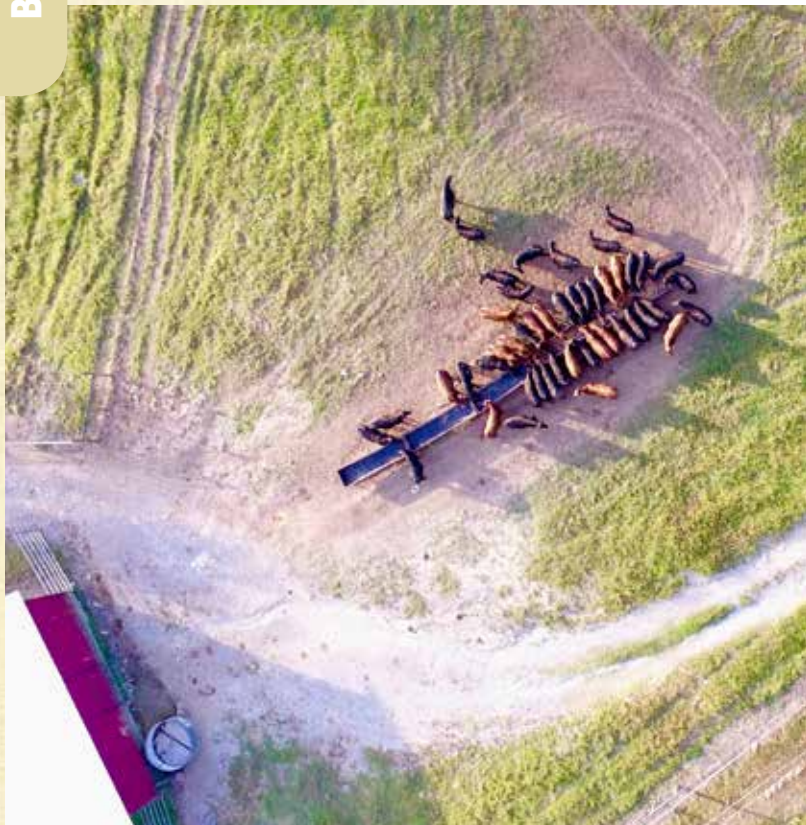
Lot 11 is another product of the TJB foundation 226M/Matrix mating. Solid pedigree in a full two year old bull.



339Z HIGHMORE 6121E | LOT 10

TC

VELVET FAMILY



BLACKCAP FAMILY

## 12 TJB 130X VICKRAM 637D ET

Homo Polled | Black(RC) | BA63

DOB: 9/2/2016

AGA#: 1384035

TATTOO: 637D

STON STON XTERMINATOR 7X  
**TJB VICKRAM 342A-ET**  
 TJB VELVET 912U-ET ET  
 TJB MASTERPIECE 138L ET  
**TJB BLACKCAP 9034 130X ET**  
 T A R BLACKCAP 9034

BW	70
WW	606
YW	913
SC	37.6

Growth & Maternal EPDs

CED	BW	WW	YW	MK	TM	CEM	HP	PG30	ST
13.6	0.3	53	76	25	52	6	4.73	2.33	17.7

Intake & Carcass EPDs

DMI	YG	CW	REA	MB	\$COW	FPI	EPI
	-0.21	7	0.4	0.17		65.09	

Lot 12 & 13 are sons of TJB Vickram, high selling bull to Taubenheims for \$15000. Dam is a deep bodied, soggy made individual that traces back to Sitz Angus herd in Montana.

## 13 TJB 130X VICKRAM 643D ET

Homo Polled | Double Black | BA63

DOB: 9/4/2016

AGA#: 1384041

TATTOO: 643D

STON STON XTERMINATOR 7X  
**TJB VICKRAM 342A-ET**  
 TJB VELVET 912U-ET ET  
 TJB MASTERPIECE 138L ET  
**TJB BLACKCAP 9034 130X ET**  
 T A R BLACKCAP 9034

BW	70
WW	625
YW	919
SC	35.7

Growth & Maternal EPDs

CED	BW	WW	YW	MK	TM	CEM	HP	PG30	ST
12.5	0.1	52	75	25	51	6	4.73	2.33	18.2

Intake & Carcass EPDs

DMI	YG	CW	REA	MB	\$COW	FPI	EPI
	-0.23	11	0.48	0.32		68.21	

## 14 TJB 914U LIFELINE 6122E ET

Homo Polled | Homo Black | BA50

DOB: 2/3/2017

AGA#: 1407955

TATTOO: 6122E

S A V FINAL ANSWER 0035  
**EGL EGL LIFELINE B101**  
 EGL ESTELLE X014  
 B C LOOKOUT 7024  
**TJB VANESSA 914U-ET ET**  
 TJB VANESSA 471P ET

BW	80
WW	617
YW	1121
SC	

Growth & Maternal EPDs

CED	BW	WW	YW	MK	TM	CEM	HP	PG30	ST
15.7	-0.5	65	94	23	56	8	6.14	1.36	17.1

Intake & Carcass EPDs

DMI	YG	CW	REA	MB	\$COW	FPI	EPI
0.036	-0.24	12	0.55	0.12	117.52	72.93	114.88

Lot 14 is a Homo Black Lifeline daughter by proven donor, 914U.



# Lots 15-60: YEARLINGS

149X | TJB MATRIARCH



*Power female is the dam of featured Lots 15-19!*

## 15 TJB 149X MASTERPIECE 727E ET

Polled (not Homo - D) | Red | PB88

DOB: 8/26/2017  
AGA#: 1415927  
TATTOO: 727E

TAU DR PEPPER 29D  
**TJB MASTERPIECE 138L ET**  
TJB MICHELLE 128F ET  
DCH HILLE M118 MAJESTY  
**TJB TJB ANISSA 913U 149X**  
TJB ANISSA 913U-ET ET

BW	74
WW	529
YW	1098
SC	37.4

Growth & Maternal EPDs

CED	BW	WW	YW	MK	TM	CEM	HP	PG30	ST
15.7	-0.3	64	93	27	60	10	6.45	2.66	18

Intake & Carcass EPDs

Index Values

DMI	YG	CW	REA	MB	\$COW	FPI	EPI
-0.027	-0.4	4	0.64	-0.05	126.26	69.02	57

Welcome to the beginning of several great red bulls offered in this year's sale. Why so many red bulls this year? Because we didn't make any heifers from most of my red matings. If you are looking for higher percentage red bulls produced from possibly the greatest female at TJB in 149X, they are here. Masterpiece has been injected strategically in the past as semen is limited. These bulls full sister was the sale topper in this year's online sale going to Dyer Farms in KY. There certainly are some bulls in Lots 14 thru 17 that can go to any registered breeder in the country. These bulls also have very acceptable EPD's. They are desirable without extremes and as we expect from our cattle they are very good on the fertility and \$Cow indexes.

## 16 TJB 149X MASTERPIECE 738E ET

Polled (not Homo - D) | Red | PB88

DOB: 8/30/2017  
AGA#: 1415933  
TATTOO: 738E

TAU DR PEPPER 29D  
**TJB MASTERPIECE 138L ET**  
TJB MICHELLE 128F ET  
DCH HILLE M118 MAJESTY  
**TJB TJB ANISSA 913U 149X**  
TJB ANISSA 913U-ET ET

BW	70
WW	763
YW	1065
SC	36.5

Growth & Maternal EPDs

CED	BW	WW	YW	MK	TM	CEM	HP	PG30	ST
15.7	-0.3	64	93	27	60	10	6.45	2.66	18

Intake & Carcass EPDs

Index Values

DMI	YG	CW	REA	MB	\$COW	FPI	EPI
-0.027	-0.4	4	0.64	-0.05	126.26	69.02	57

ANISSA FAMILY

149X MASTERPIECE 727E | LOT 15



TC

149X MASTERPIECE 738E | LOT 16



TC

# 17 TJB 149X MASTERPIECE 740E ET

Polled (not Homo - D) | Red | PB88

DOB: 8/31/2017

AGA#: 1415934

TATTOO: 740E

TAU DR PEPPER 29D  
**TJB MASTERPIECE 138L ET**  
 TJB MICHELLE 128F ET  
 DCH HILLE M118 MAJESTY  
**TJB TJB ANISSA 913U 149X**  
 TJB ANISSA 913U-ET ET

<b>BW</b>	80
<b>WW</b>	742
<b>YW</b>	1119
<b>SC</b>	33.6

Growth & Maternal EDPs

CED	BW	WW	YW	MK	TM	CEM	HP	PG30	ST
15.7	-0.3	64	93	27	60	10	6.45	2.66	18

Intake & Carcass EDPs

Index Values

DMI	YG	CW	REA	MB	\$COW	FPI	EPI
-0.027	-0.4	4	0.64	-0.05	126.26	69.02	57



# 18 TJB 149X MASTERPIECE 741E ET

Homo Polled | Red | PB88

DOB: 8/31/2017

AGA#: 1415935

TATTOO: 741E

TAU DR PEPPER 29D  
**TJB MASTERPIECE 138L ET**  
 TJB MICHELLE 128F ET  
 DCH HILLE M118 MAJESTY  
**TJB TJB ANISSA 913U 149X**  
 TJB ANISSA 913U-ET ET

<b>BW</b>	76
<b>WW</b>	715
<b>YW</b>	1139
<b>SC</b>	37.6

Growth & Maternal EDPs

CED	BW	WW	YW	MK	TM	CEM	HP	PG30	ST
15.7	-0.3	64	93	27	60	10	6.45	2.66	18

Intake & Carcass EDPs

Index Values

DMI	YG	CW	REA	MB	\$COW	FPI	EPI
-0.027	-0.4	4	0.64	-0.05	126.26	69.02	57



# 19 TJB 149X VENGEANCE 7107E

Homo Polled | Black(RC) | BA50

DOB: 10/24/2017

AGA#: 1415915

TATTOO: 7107E

GGGE 3G SMOKE N' MIRRORS  
**TJB VENGEANCE 517C ET**  
 TJB VELVET 912U-ET ET  
 DCH HILLE M118 MAJESTY  
**TJB TJB ANISSA 913U 149X**  
 TJB ANISSA 913U-ET ET

<b>BW</b>	86
<b>WW</b>	777
<b>YW</b>	1201
<b>SC</b>	37.8

Growth & Maternal EDPs

CED	BW	WW	YW	MK	TM	CEM	HP	PG30	ST
11.2	0.8	75	111	26	64	6	8.91	1.54	18.5

Intake & Carcass EDPs

Index Values

DMI	YG	CW	REA	MB	\$COW	FPI	EPI
0.017	-0.16	21	0.54	0.12	127.89	76.1	122.26

Lot 19 is the natural calf of 149X by sale topper, TJB Vengeance in 2016 also to Dyer Farms. 149X speaks for herself and Vengeance is adding some extra stretch and performance just as we expected.



# 20 TJB 913U VENGEANCE 7104E ET

Homo Polled | Homo Black | BA38

DOB: 10/23/2017

AGA#: 1423566

TATTOO: 7104E

GGGE 3G SMOKE N' MIRRORS  
**TJB VENGEANCE 517C ET**  
 TJB VELVET 912U-ET ET  
 B C LOOKOUT 7024  
**TJB ANISSA 913U-ET ET**  
 TJB ANISSA 337M ET

<b>BW</b>	82
<b>WW</b>	618
<b>YW</b>	1060
<b>SC</b>	36.7

Growth & Maternal EDPs

CED	BW	WW	YW	MK	TM	CEM	HP	PG30	ST
10	0.5	63	91	23	54	4	8.12	2.34	17.3

Intake & Carcass EDPs

Index Values

DMI	YG	CW	REA	MB	\$COW	FPI	EPI
0.025	-0.1	20	0.52	0.23	118.63	70.52	117.24

Lots 20 & 21 are ET brothers by 913U(Dam of 149X) also by Vengeance. I hope you admire the smooth lines and the thickness in these two bulls. Added performance backed by Velvet Family as well as Anissa.

# 21 TJB 913U VENGEANCE 7105E ET

Homo Polled | Homo Black | BA38

DOB: 10/31/2017  
AGA#: 1423567  
TATTOO: 7105E

GGGE 3G SMOKE N' MIRRORS  
**TJB VENGEANCE 517C ET**  
TJB VELVET 912U-ET ET  
B C LOOKOUT 7024  
**TJB ANISSA 913U-ET ET**  
TJB ANISSA 337M ET

BW	83
WW	685
YW	1155
SC	37

Growth & Maternal EPDs

CED	BW	WW	YW	MK	TM	CEM	HP	PG30	ST
10	0.5	63	91	23	54	4	8.12	2.34	17.3

Intake & Carcass EPDs

DMI	YG	CW	REA	MB	\$COW	FPI	EPI
0.025	-0.1	20	0.52	0.23	118.63	70.52	117.24

# 24 TJB 588C DITKA 755E

Double Polled | Homo Black | BA63

DOB: 9/8/2017  
AGA#: 1411209  
TATTOO: 755E

SANDPOINT BUTKUS X797  
**JKGF DITKA C85**  
JKGF LADYBUG A012  
TJB VICKRAM 342A-ET  
**TJB ANISSA 359Z 588C**  
TJB ANISSA 149X 359Z

BW	72
WW	619
YW	1088
SC	36.1

Growth & Maternal EPDs

CED	BW	WW	YW	MK	TM	CEM	HP	PG30	ST
12.1	1	71	104	22	57	6	4.91	0.71	17.2

Intake & Carcass EPDs

DMI	YG	CW	REA	MB	\$COW	FPI	EPI
	-0.16	22	0.52	0.28		76.92	

588C will be the 7th generation of this cow family we have flushed when she comes to the donor pen with her mother this fall. That speaks volumes for the predictability in this line of cattle. Combined with the performance of Ditka and we think there will be some special bulls offered. 588C also weaned 61% of BW weighing 1015 at time of weaning.



4104C ROUNDHOUSE 761W | LOT 22



588C | DAM OF LOT 24

# 22 TJB 4104C ROUNDHOUSE 761E

Homo Polled | Homo Black | BA50

DOB: 9/12/2017  
AGA#: 1411182  
TATTOO: 761E

EGL ROUNDUP X777  
**EGL ROUNDHOUSE B019**  
EGL EVELYNN U426  
CTR CTR SANDHILLS 0065X  
**TJB ANISSA 921U 4104C ET**  
TJB ANISSA 921U-ET ET

BW	73
WW	622
YW	1055
SC	39.2

Growth & Maternal EPDs

CED	BW	WW	YW	MK	TM	CEM	HP	PG30	ST
11.9	1.4	66	98	19	52	7	9.15	1.82	11.8

Intake & Carcass EPDs

DMI	YG	CW	REA	MB	\$COW	FPI	EPI
0.059	-0.12	19	0.41	0.52	92.42	79.35	116.61

We are tremendously excited about our 4100 series females. We think we have found some to replace our proven 900 numbered donors in time. 4104C is one of 3 outstanding 0065X daughters of 921U.

# 25 TJB 495B ROUNDHOUSE 760E

Homo Polled | Homo Black | BA50

DOB: 9/11/2017  
AGA#: 1411192  
TATTOO: 760E

EGL ROUNDUP X777  
**EGL ROUNDHOUSE B019**  
EGL EVELYNN U426  
CTR CTR SANDHILLS 0065X  
**TJB ANISSA 921U 495B-ET**  
TJB ANISSA 921U-ET ET

BW	72
WW	492
YW	923
SC	38.7

Growth & Maternal EPDs

CED	BW	WW	YW	MK	TM	CEM	HP	PG30	ST
12.1	0.5	53	79	20	46	7	9.43	2.27	12.4

Intake & Carcass EPDs

DMI	YG	CW	REA	MB	\$COW	FPI	EPI
0.059	-0.1	16	0.37	0.49	94.45	71.74	97.18

The comments I made earlier about the Lot 23 bull certainly also apply to this guy. His dam is one of our very favorites not just for us but several visitors as well. She is flawless in her phenotype. She weaned 46% of her BW and weighed 1080 with her second calf.

# 23 TJB 490B WT 746E

Homo Polled | Homo Black | BA75

DOB: 9/3/2017  
AGA#: 1411190  
TATTOO: 746E

RWG TRACTION 7412  
**CTR WIDE TRACK 3706A ET**  
CTR 198L  
CTR CTR SANDHILLS 0065X  
**TJB ANISSA 056X 490B-ET**  
TJB ANISSA 056X-ET ET

BW	84
WW	580
YW	961
SC	34.4

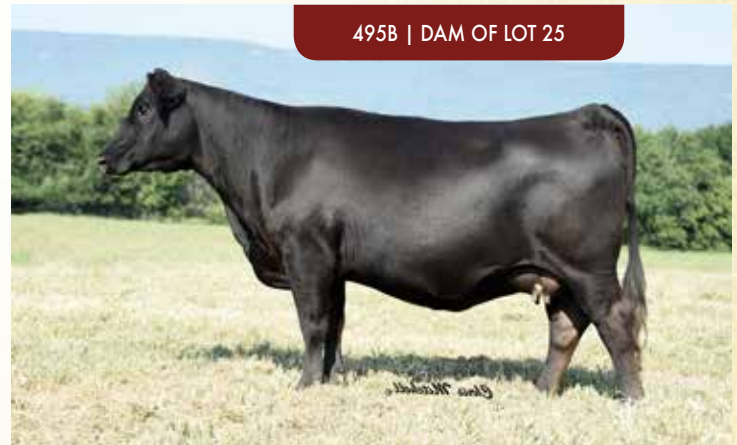
Growth & Maternal EPDs

CED	BW	WW	YW	MK	TM	CEM	HP	PG30	ST
10.4	1.7	58	77	20	49	6	8.33	2.77	14.8

Intake & Carcass EPDs

DMI	YG	CW	REA	MB	\$COW	FPI	EPI
0.053	-0.23	12	0.51	0.16	107.33	64.51	62.94

This bull is a great example of what we want to do as a breeder. His dam, 490B weaned this calf at 60% of her body weight (980 pounds) with actual adjusted WW. She did this and maintained her condition and bred back to fit our short breeding season. She might be too small for some but we think she will be a 1150 to 1200 pound mature cow. This bull will make your females be the keeping kind.



495B | DAM OF LOT 25

ANISSA FAMILY

# 26

## TJB 921U ALBERTO 774E

Homo Polled | Homo Black | BA63

DOB: 9/22/2017

AGA#: 1425344

TATTOO: 774E

SLC TOUCHDOWN 166W

**SLC TOUCHDOWN 215Z**

AR VICKIE 59N

B C LOOKOUT 7024

**TJB ANISSA 921U-ET ET**

TJB ANISSA 337M ET

BW	65
WW	661
YW	982
SC	36.3

Growth & Maternal EPDs

CED	BW	WW	YW	MK	TM	CEM	HP	PG30	ST
17.4	-2	50	72	29	54	8	0.17	1.36	14.2

Intake & Carcass EPDs

DMI	YG	CW	REA	MB	\$COW	FPI	EPI
	-0.35	12	0.62	0.09		66.46	

774E is the natural calf by proven donor, 921U sired by the bull we affectionately call Alberto from Canada. He has produced a nice set of bulls for this sale. One of the stoutest PB bulls we have seen anywhere and he is passing that on to his sons.

# 27

## TJB 4103C MATRIX 797E

Homo Polled | Black(RC) | BA50

DOB: 10/14/2017

AGA#: 1411181

TATTOO: 797E

B C MATRIX 4132

**TJB 226M MATRIX 333Z-ET**

TJB VELVET MOON 226M - ET

CTR CTR SANDHILLS 0065X

**TJB VANESSA 914U 4103C ET**

TJB VANESSA 914U-ET ET

BW	70
WW	544
YW	940
SC	36.3

Growth & Maternal EPDs

CED	BW	WW	YW	MK	TM	CEM	HP	PG30	ST
11.6	1.1	60	86	19	49	6	9.86	2.29	18.6

Intake & Carcass EPDs

DMI	YG	CW	REA	MB	\$COW	FPI	EPI
0.064	-0.12	20	0.42	0.22	128.22	68.23	92.95

Lot 27 is another son by a 914U/Sandhills daughter sired by a Velvet 226M son. The dam of this bull is one of the best we have ever raised. Look for exciting things from this cow.

# SO GOD MADE A FARMER

*by Paul Harvey*

And on the eighth day, God looked down on his planned paradise and said, "I need a caretaker." So God made a farmer.

God said, "I need somebody willing to get up before dawn, milk cows, work all day in the field, milk cows again, eat supper, then go to town and stay past midnight at a meeting of the school board." So God made a farmer.

God said, "I need somebody willing to sit up all night with a newborn colt and watch it die, then dry his eyes and say, 'Maybe next year,' I need somebody who can shape an ax handle from an ash tree, shoe a horse with hunk of car tire, who can make a harness out hay wire, feed sacks and shoe scraps. Who, during planting time and harvest season will finish his 40-hour week by Tuesday noon and then,

paining from tractor back, put in another 72 hours." So God made the farmer.

God said, "I need somebody strong enough to clear trees and heave bales, yet gentle enough to yeap lambs and wean pigs and tend the pink-comb pullets, who will stop his mower for an hour to splint the leg of a meadowlark."

It had to be somebody who'd plow deep and straight and not cut corners. Somebody to seed, weed, feed, breed, and brake, and disk, and plow, and plant, and tie the fleece and strain the milk, . Somebody who'd bale a family together with the soft, strong bonds of sharing, who would laugh, and then sigh and then reply with smiling eyes when his son says that he wants to spend his life doing what Dad does. "So God made a farmer."

410B | DAM OF LOTS 28-30



## 28 TJB 410B BUDDY 701E ET

Homo Polled | Red | BA75

DOB: 8/11/2017

AGA#: 1423558

TATTOO: 701E

GKT BUDDY 7R  
**CRAN BUDDY BOY T729**  
 CRAN R251  
 TJB VALERO 342Z ET  
**TJB BLACKBIRD 827T 410B ET**  
 TJB BLACKBIRD 827T ET

BW	60
WW	722
YW	1025
SC	36.7

Growth & Maternal EPDs

CED	BW	WW	YW	MK	TM	CEM	HP	PG30	ST
12.3	0.5	59	87	22	51	6	6.27	3.52	17.4

Intake & Carcass EPDs

DMI	YG	CW	REA	MB	\$COW	FPI	EPI
	-0.35	4	0.52	0.02		64.83	

These 3 flush mate brothers could be the thickest made individuals offered. The dam of these bulls, 410B, is destined to be one of the next line of great donor females. As you can see from her picture, she is perfectly designed with an udder as nice as you will see. These Buddy Boys are sure to impress you.

## 29 TJB 410B BUDDY 724E ET

Homo Polled | Red | BA75

DOB: 8/25/2017

AGA#: 1423559

TATTOO: 724E

GKT BUDDY 7R  
**CRAN BUDDY BOY T729**  
 CRAN R251  
 TJB VALERO 342Z ET  
**TJB BLACKBIRD 827T 410B ET**  
 TJB BLACKBIRD 827T ET

BW	85
WW	754
YW	1071
SC	37.2

Growth & Maternal EPDs

CED	BW	WW	YW	MK	TM	CEM	HP	PG30	ST
12.3	0.5	59	87	22	51	6	6.27	3.52	17.4

Intake & Carcass EPDs

DMI	YG	CW	REA	MB	\$COW	FPI	EPI
	-0.35	4	0.52	0.02		64.83	

410B BUDDY 701E | LOT 28



410B BUDDY 733E | LOT 30





### 30 TJB 410B BUDDY 733E ET

Homo Polled | Red | BA75

DOB:	8/28/2017	GKT BUDDY 7R		
AGA#:	1423560	<b>CRAN BUDDY BOY T729</b>	<b>BW</b>	75
TATTOO:	733E	CRAN R251	<b>WW</b>	792
		TJB VALERO 342Z ET	<b>YW</b>	1181
		<b>TJB BLACKBIRD 827T 410B ET</b>	<b>SC</b>	34.3
		TJB BLACKBIRD 827T ET		

Growth & Maternal EPDs									
CED	BW	WW	YW	MK	TM	CEM	HP	PG30	ST
12.3	0.5	59	87	22	51	6	6.27	3.52	17.4

Intake & Carcass EPDs							Index Values		
DMI	YG	CW	REA	MB	\$COW	FPI	EPI		
	-0.35	4	0.52	0.02		64.83			

### 34 TJB 827T DITKA 742E ET

Homo Polled | Black(RC) | BA50

DOB:	8/31/2017	SANDPOINT BUTKUS X797		
AGA#:	1415936	<b>JKGF DITKA C85</b>	<b>BW</b>	78
TATTOO:	742E	JKGF LADYBUG A012	<b>WW</b>	765
		TJB MASTERPIECE 138L ET	<b>YW</b>	1154
		<b>TJB BLACKBIRD 827T ET</b>	<b>SC</b>	38.6
		LEMMON BLACKBIRD 1119		

Growth & Maternal EPDs									
CED	BW	WW	YW	MK	TM	CEM	HP	PG30	ST
14.2	-0.5	63	92	20	51	8	6.51	1.84	17.6

Intake & Carcass EPDs							Index Values		
DMI	YG	CW	REA	MB	\$COW	FPI	EPI		
	-0.16	20	0.54	0.33		75.75			

742E is a big growthy son of the granddam of Lots 28-33.

\*Lots 31 and 32 were pulled from the sale due to disposition after catalog design.

### 33 TJB 353Z WT 770E

Homo Polled | Homo Black | PB88

DOB:	9/20/2017	RWG TRACTION 7412		
AGA#:	1411171	<b>CTR WIDE TRACK 3706A ET</b>	<b>BW</b>	74
TATTOO:	770E	CTR 198L	<b>WW</b>	586
		CIBS FIRST IMPRESSION	<b>YW</b>	1090
		<b>TJB BLACKBIRD 827T 353Z</b>	<b>SC</b>	37.7
		TJB BLACKBIRD 827T ET		

Growth & Maternal EPDs									
CED	BW	WW	YW	MK	TM	CEM	HP	PG30	ST
12.4	0.3	61	85	24	54	6	4.86	0.41	15.3

Intake & Carcass EPDs							Index Values		
DMI	YG	CW	REA	MB	\$COW	FPI	EPI		
	-0.34	8	0.63	0.11		68.35			

Another Wide Track produced by a daughter of 827T. 353Z has been a phenotypic giant since birth. Another flawless udder in a complete package.

### 35 TJB 827T VENGEANCE 793E

Homo Polled | Black(RC) | BA38

DOB:	10/9/2017	GGGE 3G SMOKE N' MIRRORS		
AGA#:	1411212	<b>TJB VENGEANCE 517C ET</b>	<b>BW</b>	72
TATTOO:	793E	TJB VELVET 912U-ET ET	<b>WW</b>	612
		TJB MASTERPIECE 138L ET	<b>YW</b>	1062
		<b>TJB BLACKBIRD 827T ET</b>	<b>SC</b>	33.8
		LEMMON BLACKBIRD 1119		

Growth & Maternal EPDs									
CED	BW	WW	YW	MK	TM	CEM	HP	PG30	ST
9.2	0.9	64	95	20	52	5	11.46	2.08	19.1

Intake & Carcass EPDs							Index Values		
DMI	YG	CW	REA	MB	\$COW	FPI	EPI		
	-0.12	23	0.55	0.32		72.64			

Another Vengeance son by our 827T donor.



# 36 TJB 258Y MASTERPIECE 769E ET

Homo Polled | Red | PB88

DOB: 9/20/2017

AGA#: 1423561

TATTOO: 769E

TAU DR PEPPER 29D  
**TJB MASTERPIECE 138L ET**  
 TJB MICHELLE 128F ET  
 CRAN BUDDY BOY T729  
**TJB LADY GRANITE 258Y-ET**  
 BTI 2030P

BW	70
WW	721
YW	1114
SC	34.2

Growth & Maternal EPDs

CED	BW	WW	YW	MK	TM	CEM	HP	PG30	ST
12.4	1.2	62	92	23	54	7	4.66	3.48	17.2

Intake & Carcass EPDs

DMI	YG	CW	REA	MB	\$COW	FPI	EPI
0.01	-0.37	4	0.51	0.04	119.31	66.68	68.92

Lots 36-40 are certainly a sale feature as a group. These bulls are produced by the Lady Granite Family that we certainly wish we had more of here. The dam, 258Y is a truly massive female that is co-owned with Warner Beef Genetics and had a successful show career but is certainly most amazing standing in our pasture. Any familiar with our program remember Shania, our power donor from the past. This cow is equally as stout but more feminine in design. The strength of these Masterpiece sons certainly make them candidates for any registered breeder as well as commercial men wanting to add sheer pounds and performance. Which one is the best? The decision is yours to make. I could not decide so I put them in numerical order.



258Y MASTERPIECE 769E | LOT 36

TC

# 37 TJB 258Y MASTERPIECE 771E ET

Homo Polled | Red | PB88

DOB: 9/20/2017

AGA#: 1423562

TATTOO: 771E

TAU DR PEPPER 29D  
**TJB MASTERPIECE 138L ET**  
 TJB MICHELLE 128F ET  
 CRAN BUDDY BOY T729  
**TJB LADY GRANITE 258Y-ET**  
 BTI 2030P

BW	71
WW	657
YW	1091
SC	39.2

Growth & Maternal EPDs

CED	BW	WW	YW	MK	TM	CEM	HP	PG30	ST
12.4	1.2	62	92	23	54	7	4.66	3.48	17.2

Intake & Carcass EPDs

DMI	YG	CW	REA	MB	\$COW	FPI	EPI
0.01	-0.37	4	0.51	0.04	119.31	66.68	68.92



258Y MASTERPIECE 771E | LOT 37

JT



258Y MASTERPIECE 776E | LOT 38

JT



258Y MASTERPIECE 777E | LOT 39

TC

# 38 TJB 258Y MASTERPIECE 776E ET

Homo Polled | Red | PB88

DOB: 9/25/2017

AGA#: 1423563

TATTOO: 776E

TAU DR PEPPER 29D  
**TJB MASTERPIECE 138L ET**  
 TJB MICHELLE 128F ET  
 CRAN BUDDY BOY T729  
**TJB LADY GRANITE 258Y-ET**  
 BTI 2030P

BW	78
WW	817
YW	1260
SC	37.4

Growth & Maternal EPDs

CED	BW	WW	YW	MK	TM	CEM	HP	PG30	ST
12.4	1.2	62	92	23	54	7	4.66	3.48	17.2

Intake & Carcass EPDs

DMI	YG	CW	REA	MB	\$COW	FPI	EPI
0.01	-0.37	4	0.51	0.04	119.31	66.68	68.92

# 39 TJB 258Y MASTERPIECE 777E ET

Homo Polled | Red | PB88

DOB: 9/25/2017

AGA#: 1423564

TATTOO: 777E

TAU DR PEPPER 29D  
**TJB MASTERPIECE 138L ET**  
 TJB MICHELLE 128F ET  
 CRAN BUDDY BOY T729  
**TJB LADY GRANITE 258Y-ET**  
 BTI 2030P

BW	74
WW	736
YW	1022
SC	34.4

Growth & Maternal EPDs

CED	BW	WW	YW	MK	TM	CEM	HP	PG30	ST
12.4	1.2	62	92	23	54	7	4.66	3.48	17.2

Intake & Carcass EPDs

DMI	YG	CW	REA	MB	\$COW	FPI	EPI
0.01	-0.37	4	0.51	0.04	119.31	66.68	68.92

GRANITE FAMILY



## 40 TJB 258Y MASTERPIECE 780E ET

Homo Polled | Red | PB88

DOB: 9/28/2017  
 AGA#: 1423565  
 TATTOO: 780E

TAU DR PEPPER 29D  
**TJB MASTERPIECE 138L ET**  
 TJB MICHELLE 128F ET  
 CRAN BUDDY BOY T729  
**TJB LADY GRANITE 258Y-ET**  
 BTI 2030P

<b>BW</b>	84
<b>WW</b>	746
<b>YW</b>	1215
<b>SC</b>	36.4

Growth & Maternal EPDs

CED	BW	WW	YW	MK	TM	CEM	HP	PG30	ST
12.4	1.2	62	92	23	54	7	4.66	3.48	17.2

Intake & Carcass EPDs

DMI	YG	CW	REA	MB	SCOW	FPI	EPI
0.01	-0.37	4	0.51	0.04	119.31	66.68	68.92

Index Values

## 41 TJB 536C WT 749E

Double Polled | Homo Black | PB88

DOB: 9/4/2017  
 AGA#: 1411198  
 TATTOO: 749E

RWG TRACTION 7412  
**CTR WIDE TRACK 3706A ET**  
 CTR 198L  
 TJB VICKRAM 342A-ET  
**TJB LADY GRANITE 346Z 536C**  
 TJB LADY GRANITE 346Z-ET

<b>BW</b>	64
<b>WW</b>	534
<b>YW</b>	885
<b>SC</b>	36

Growth & Maternal EPDs

CED	BW	WW	YW	MK	TM	CEM	HP	PG30	ST
13.1	-1	51	63	23	48	7	8.17	1.5	16.4

Intake & Carcass EPDs

DMI	YG	CW	REA	MB	SCOW	FPI	EPI
	-0.37	6	0.64	0.1		63.34	

PB88 bull here tracing to our original Granite 432S and 2001E with a shot of TJB Masterpiece as well.



128X TOP GUN 704E | LOT 42



TC

## 42 TJB 128X TOP GUN 704E ET

Homo Polled | Homo Black | BA50

DOB: 8/19/2017  
 AGA#: 1415920  
 TATTOO: 704E

TAU MR GRID TOPPER 43T  
**TAU TOP GUN 292Y**  
 TAU MS 4153P  
 TJB MASTERPIECE 138L ET  
**TJB BLACKCAP 9034 128X ET**  
 T A R BLACKCAP 9034

BW	66
WW	591
YW	1017
SC	36.2

Growth & Maternal EPDs

CED	BW	WW	YW	MK	TM	CEM	HP	PG30	ST
16.1	0.5	63	91	23	55	10	1.73	3.32	13.3

Intake & Carcass EPDs

DMI	YG	CW	REA	MB	\$COW	FPI	EPI
	-0.14	13	0.26	0.07		68.45	

New family here starting off with one of my favorite bulls in the sale. He will be easy to spot because of the birthmarks around his back legs. You will like the bull and never worry about the color!

128X | DAM OF LOT 42



## 43 TJB 415B ROUNDHOUSE 773E

Homo Polled | Homo Black | BA63

DOB: 9/21/2017  
 AGA#: 1411184  
 TATTOO: 773E

EGL ROUNDUP X777  
**EGL ROUNDHOUSE B019**  
 EGL EVELYNN U426  
 XXB BIG N' RICH 911P ET  
**TJB BLACKCAP 823T 415B ET**  
 TJB BLACKCAP B042 823T ET

BW	68
WW	618
YW	1045
SC	38

Growth & Maternal EPDs

CED	BW	WW	YW	MK	TM	CEM	HP	PG30	ST
12.6	0.3	63	94	21	52	8	8.69	0.44	12.4

Intake & Carcass EPDs

DMI	YG	CW	REA	MB	\$COW	FPI	EPI
0.06	-0.17	14	0.39	0.37	93.61	75.4	114.03

Very nice bull from a full sister to our Big Show bull we used in our program. He was the first calf by donor 823T and has left us with some outstanding cattle.

## 44 TJB 156X ALBERTO 795E

Homo Polled | Homo Black | PC75

DOB: 10/10/2017  
 AGA#: 1411166  
 TATTOO: 795E

SLC TOUCHDOWN 166W  
**SLC TOUCHDOWN 215Z**  
 AR VICKIE 59N  
 TJB MASTERPIECE 138L ET  
**TJB BLACKCAP 823T 156X ET**  
 TJB BLACKCAP B042 823T ET

BW	72
WW	591
YW	1058
SC	36.8

Growth & Maternal EPDs

CED	BW	WW	YW	MK	TM	CEM	HP	PG30	ST
15.4	-0.6	58	83	25	54	8	2.88	-0.45	13.1

Intake & Carcass EPDs

DMI	YG	CW	REA	MB	\$COW	FPI	EPI
	-0.42	2	0.58	0		66.59	

156X is a really long sided, beautiful patterned Masterpiece by 823T.

BLACKCAP FAMILY



LARA GRAND SLAM N020E | LOT 45



424B | DAM OF LOT 45

# 45 LARA GRAND SLAM ET

Homo Polled | Black(RC) | BA38

DOB: 9/18/2017

S A V BISMARCK 5682

S A V BRILLIANCE 8077

AGA#: 1410148

S A V BLACKCAP MAY 5270

TATTOO: N020E

TAU GUNSLINGER 19U

TJB VANESSA 016W 424B ET

TJB VANESSA 016W-ET ET

BW	81
WW	641
YW	1179
SC	

Growth & Maternal EDPs

CED	BW	WW	YW	MK	TM	CEM	HP	PG30	ST
12.4	0	61	89	25	56	5	6.44	2.33	18.5

Intake & Carcass EDPs

DMI	YG	CW	REA	MB	\$COW	FPI	EPI
-0.088	-0.11	27	0.61	0.29	123.7	72.55	64.09

This is the first offering of TJB Vanessa 424B "Penny" offspring and we don't think you will be disappointed. Lara had an extremely successful run with Penny and eventually was named the Reserve National Champion Female at the Gelbvieh Junior Nationals. Sound, functional and style come to mind when you give this guy a look. Grand Slam was named Grand Champion Balancer bull at the Ohio Beef Expo as a 6 month old calf, and he grabbed another banner at the American Gelbvieh Junior Classic this summer by being slapped the Reserve Grand Champion Bred and Owned Balancer bull for Lara. He has been a fun one to raise, and we think he is just beginning to make a name for himself. Lara is retaining 50% semen interest on this bull. She would be an awesome partner!!



358Z ALBERTO 7120E | LOT 46



358Z | DAM OF LOT 46



*"Grand Slam has been a lot of fun to raise and show. I will miss him, but I'm looking forward to the next chapter in his life!"*

LARA RITTENHOUSE (12), OWNER OF LOT 45

# 46 TJB 358Z ALBERTO 7120E

Homo Polled | Homo Black | BA63

DOB: 11/4/2017

SLC TOUCHDOWN 166W

SLC TOUCHDOWN 215Z

AR VICKIE 59N

AGA#: 1415918

S A V NET WORTH 4200

TATTOO: 7120E

TJB VANESSA 471P 358Z-ET

TJB VANESSA 471P ET

BW	83
WW	628
YW	1026
SC	32.6

Growth & Maternal EDPs

CED	BW	WW	YW	MK	TM	CEM	HP	PG30	ST
12.7	0.3	55	77	26	53	7	3.12	-0.87	14.9

Intake & Carcass EDPs

DMI	YG	CW	REA	MB	\$COW	FPI	EPI
	-0.29	19	0.62	0.17		66.33	

Vickie Vail descendant from a powerful Net Worth daughter.

# 47 TJB 403B DITKA 713E

Homo Polled | Homo Black | BA50

DOB: 8/21/2017

AGA#: 1411176

TATTOO: 713E

SANDPOINT BUTKUS X797  
**JKGF DITKA C85**  
 JKGF LADYBUG A012  
 DJS DERRINGER 96X  
**TJB VANESSA 471P 403B**  
 TJB VANESSA 471P 358Z-ET

BW	64
WW	630
YW	989
SC	37

Growth & Maternal EPDs

CED	BW	WW	YW	MK	TM	CEM	HP	PG30	ST
16.9	-1.9	63	87	22	54	10	3.12	0.57	17.8

Intake & Carcass EPDs

DMI	YG	CW	REA	MB	SCOW	FPI	EPI
	-0.14	21	0.51	0.2		74.71	

713E is another performing Ditka son. His Derringer dam weaned 62% of her BW and weighed 1020 at weaning.



# 48 TJB 4105C MASTERPIECE 743E

Homo Polled | Red | BA75

DOB: 9/1/2017

AGA#: 1411183

TATTOO: 743E

TAU DR PEPPER 29D  
**TJB MASTERPIECE 138L ET**  
 TJB MICHELLE 128F ET  
 TJB VALERO 342Z ET  
**TJB VANESSA 914U 4105C ET**  
 TJB VANESSA 914U-ET ET

BW	65
WW	662
YW	1059
SC	37.9

Growth & Maternal EPDs

CED	BW	WW	YW	MK	TM	CEM	HP	PG30	ST
13.9	0.4	71	101	26	61	8	8.72	2.78	18.6

Intake & Carcass EPDs

DMI	YG	CW	REA	MB	SCOW	FPI	EPI
-0.016	-0.35	8	0.63	0.09	132.54	74.81	91.88

We went back in the tank to use a good bit of our supply of Masterpiece semen in this calf crop. He really has done some phenomenal things for our program over the years so why not keep trying. I think you will really like this bull. Very nice growth EPD's and from a tremendous cherry red Valero/914U.



# 49 TJB 4101C MATRIX 333Z 784E

Homo Polled | Red | BA50

DOB: 10/2/2017

AGA#: 1411179

TATTOO: 784E

B C MATRIX 4132  
**TJB 226M MATRIX 333Z-ET**  
 TJB VELVET MOON 226M - ET  
 CTR CTR SANDHILLS 0065X  
**TJB VANESSA 914U 4101C ET**  
 TJB VANESSA 914U-ET ET

BW	69
WW	592
YW	971
SC	38.9

Growth & Maternal EPDs

CED	BW	WW	YW	MK	TM	CEM	HP	PG30	ST
11.7	1	63	89	19	51	6	9.75	3.2	18.6

Intake & Carcass EPDs

DMI	YG	CW	REA	MB	SCOW	FPI	EPI
0.064	-0.12	20	0.42	0.22	129.38	70.01	96.1

784E is also by a Sandhills daughter but this one is by 914U. The 4101C and 4103C are sisters and what a pair. Their flushmate brother, 4120C will be used heavily here due to the quality of his sisters.



# 50 TJB 381A ALBERTO 786E

Homo Polled | Black(RC) | BA63

DOB: 10/6/2017

AGA#: 1411174

TATTOO: 786E

SLC TOUCHDOWN 166W  
**SLC TOUCHDOWN 215Z**  
 AR VICKIE 59N  
 S A V NET WORTH 4200  
**TJB VANESSA 471P 381A-ET**  
 TJB VANESSA 471P ET

BW	74
WW	540
YW	1019
SC	

Growth & Maternal EPDs

CED	BW	WW	YW	MK	TM	CEM	HP	PG30	ST
13.8	0.2	58	84	25	54	8	3.49	-1.14	14.2

Intake & Carcass EPDs

DMI	YG	CW	REA	MB	SCOW	FPI	EPI
	-0.28	17	0.59	0.14		67.85	

Alberto son from another Net Worth daughter. Valiant is a Sandhills by 912U and he is making some nice cattle.

VANESSA FAMILY



W0008 VALIANT 7100E | LOT 51

TC



348Z | DAM OF LOT 53

VELVET FAMILY

## 51 TJB W0008 VALIANT 7100E

Homo Polled | Homo Black | BA25

DOB: 10/17/2017  
 AGA#: 1418685  
 TATTOO: 7100E

CTR CTR SANDHILLS 0065X  
**TJB VALIANT 520C ET**  
 TJB VELVET 912U-ET ET  
 CONNEALY FORWARD  
**THREE TREES FIRST LADY W0008**  
 THREE TREES FIRST LADY R0554

BW	75
WW	752
YW	1162
SC	35.1

Growth & Maternal EPDs

CED	BW	WW	YW	MK	TM	CEM	HP	PG30	ST
12.2	0.2	65	99	20	52	6	6.2	2.78	13.6

Intake & Carcass EPDs

DMI	YG	CW	REA	MB	\$COW	FPI	EPI
0.059	0	28	0.47	0.62	97.55	82.14	143.67

This bull could be the best total package in the sale. He also is by Valiant but by an Angus cow that is a granddaughter of the 4465 cow that became known as the Feed Efficiency Cow in the Angus breed. This bull is balanced and sound and sure to make many friends. One negative note unfortunately, this bull is DDC which means he has one copy of the recessive gene known as Developmental Duplication. I really have little concern using this guy but visit with me if you have questions.

## 53 TJB 348Z WT 764E

Homo Polled | Black(RC) | BA75

DOB: 9/15/2017  
 AGA#: 1411170  
 TATTOO: 764E

RWG TRACTION 7412  
**CTR WIDE TRACK 3706A ET**  
 CTR 198L  
 B C MATRIX 4132  
**TJB VELVET 348Z-ET**  
 TJB VELVET MOON 226M - ET

BW	74
WW	518
YW	894
SC	33

Growth & Maternal EPDs

CED	BW	WW	YW	MK	TM	CEM	HP	PG30	ST
13.1	-0.3	53	67	21	48	6	7.68	1.23	17.8

Intake & Carcass EPDs

DMI	YG	CW	REA	MB	\$COW	FPI	EPI
0.068	-0.18	18	0.48	0.09	119.85	62.43	54.81

Full brother to another of the top selling heifers in the online sale this year going to our good friends at Swanson Cattle Company, 348Z is a gorgeous female and stamps her progeny.

## 52 TJB 339Z ALBERTO 7110E

Homo Polled | Black(RC) | BA63

DOB: 10/27/2017  
 AGA#: 1415917  
 TATTOO: 7110E

SLC TOUCHDOWN 166W  
**SLC TOUCHDOWN 215Z**  
 AR VICKIE 59N  
 SINCLAIR GRASS MASTER  
**TJB VELVET 339Z-ET**  
 TJB VELVET MOON 226M - ET

BW	75
WW	643
YW	1097
SC	39.4

Growth & Maternal EPDs

CED	BW	WW	YW	MK	TM	CEM	HP	PG30	ST
14.4	-1.4	56	81	25	53	6	4.41	0.64	13.4

Intake & Carcass EPDs

DMI	YG	CW	REA	MB	\$COW	FPI	EPI
	-0.32	21	0.63	0.17		69.95	

Last calf produced from deceased donor 339Z. She had many great bulls in previous years.

## 54 TJB 528C DITKA 768E

Scurred | Homo Black | BA63

DOB: 9/19/2017  
 AGA#: 1411197  
 TATTOO: 768E

SANDPOINT BUTKUS X797  
**JKGF DITKA C85**  
 JKGF LADYBUG A012  
 STON STON XTERMINATOR 7X  
**TJB VELVET 137X 528C ET**  
 TJB TJB VELVET 137X ET

BW	72
WW	579
YW	1056
SC	33.5

Growth & Maternal EPDs

CED	BW	WW	YW	MK	TM	CEM	HP	PG30	ST
12.8	0.5	68	102	21	56	6	4.59	1.2	18.2

Intake & Carcass EPDs

DMI	YG	CW	REA	MB	\$COW	FPI	EPI
	-0.21	22	0.61	0.27		76.23	

The dam of this bull recently sold to Tony Patton and his family and we think she will be heard from in this breed. She is a very nice Xterminator daughter from a full sister to 912U and 348Z. This bull has light scurs.

## 55 TJB 908U ALBERTO 782E

Homo Polled | Homo Black | BA63

DOB: 9/29/2017  
 AGA#: 1411213  
 TATTOO: 782E

SLC TOUCHDOWN 166W  
**SLC TOUCHDOWN 215Z**  
 AR VICKIE 59N  
 B C MATRIX 4132  
**TJB VELVET 908U-ET ET**  
 TJB VELVET MOON 226M - ET

BW	75
WW	562
YW	1024
SC	36.5

Growth & Maternal EPDs

CED	BW	WW	YW	MK	TM	CEM	HP	PG30	ST
14.5	-0.4	60	84	22	52	6	5.25	0.3	16.7

Intake & Carcass EPDs

DMI	YG	CW	REA	MB	\$COW	FPI	EPI
	-0.27	14	0.52	0.07		67.66	

Another Alberto from ranch favorite 908U offered as Lot 55.

# 56 TJB 515C NEVADA 707E

Double Polled | Homo Black | BA50

DOB: 8/20/2017

AGA#: 1411196

TATTOO: 707E

DBCC FINAL OBJECTIVE  
**BTBR BTBR NEVADA 1170Y**  
 BTBR MS BLACK CROSS 6044  
 BC BALANCE 516-7  
**TJB VERONICA 515C**  
 CRAN Z269 ET

<b>BW</b>	72
<b>WW</b>	641
<b>YW</b>	1156
<b>SC</b>	32.5

Growth & Maternal EPDs

CED	BW	WW	YW	MK	TM	CEM	HP	PG30	ST
15.5	-0.5	68	111	21	56	8	8.32	2.28	15

Intake & Carcass EPDs

Index Values

DMI	YG	CW	REA	MB	\$COW	FPI	EPI
0.056	-0.16	13	0.41	0.54	110.79	85.44	139.03

One of the two Nevada sons offered traces back to Veronica Vaughn and Buddy Boy. The full sisters to the dam of this bull have sure done some winning for the Welsh family and September Farms.



# 57 TJB 103X ROUNDHOUSE 754E ET

Homo Polled | Homo Black | BA50

DOB: 9/5/2017

AGA#: 1415938

TATTOO: 754E

EGL ROUNDUP X777  
**EGL ROUNDHOUSE B019**  
 EGL EVELYNN U426  
 TJB MASTERPIECE 138L ET  
**TJB TJB ERICA 103X-ET**  
 BCF 217M ERICA P246

<b>BW</b>	68
<b>WW</b>	534
<b>YW</b>	895
<b>SC</b>	35.7

Growth & Maternal EPDs

CED	BW	WW	YW	MK	TM	CEM	HP	PG30	ST
11.7	0.5	57	87	23	52	8	9.06	1.78	14

Intake & Carcass EPDs

Index Values

DMI	YG	CW	REA	MB	\$COW	FPI	EPI
	-0.06	15	0.27	0.39		71.81	

ET son by another Masterpiece donor in the program.

ERICA FAMILY





## 58 TJB 506C NEVADA 712E

Double Polled | Homo Black | BA63

DOB: 8/21/2017

DBCC FINAL OBJECTIVE  
BTBR BTBR NEVADA 1170Y  
BTBR MS BLACK CROSS 6044

AGA#: 1411193

CTR CTR SANDHILLS 0065X

TATTOO: 712E

TJB KATRINA 506C ET  
DLW MS KINGPIN 408P

BW	63
WW	506
YW	951
SC	34.5

Growth & Maternal EPDs

CED	BW	WW	YW	MK	TM	CEM	HP	PG30	ST
13.6	-1.2	55	85	19	47	9	10.22	2.75	11.9

Intake & Carcass EPDs

DMI	YG	CW	REA	MB	\$COW	FPI	EPI
0.047	-0.23	10	0.41	0.59	96.57	78.73	107.7

The other Nevada son from a daughter of 408P that we co-owned with Warner Beef Genetics. Nevada was added to give us more marbling and he made a nice product.

## 60 TJB Z269 ROB ROY 758E

Homo Polled | Red | BA50

DOB: 9/9/2017

\*PRW RED WILD ROSE ROBINHOOD 1  
NL RED NORTHLINE ROB ROY 122K  
RED BAR EL SYBIL 122E

AGA#: 1411217

CRAN BUDDY BOY T729

TATTOO: 758E

CRAN Z269 ET  
TJB VERONICA VAUGHN 220L

BW	86
WW	652
YW	
SC	

Growth & Maternal EPDs

CED	BW	WW	YW	MK	TM	CEM	HP	PG30	ST
7.3	2.5	61	99	28	58	5	1.74	0.8	11.7

Intake & Carcass EPDs

DMI	YG	CW	REA	MB	\$COW	FPI	EPI
0.012	-0.24	6	0.32	0.05	79.89	63.81	92.36

If you like your bulls with more frame, this may be your bull. He is son of proven female, Z269 who sold two very successful show heifers in her career.

## 59 TJB 311Z ALBERTO 775E

Homo Polled | Homo Black | PC75

DOB: 9/30/2017

SLC TOUCHDOWN 166W  
SLC TOUCHDOWN 215Z  
AR VICKIE 59N

AGA#: 1411168

CCRO CCROSS GOOD FORTUNE 8206

TATTOO: 775E

TJB JOY 148X 311Z  
TJB TJB JOY 148X

BW	77
WW	571
YW	988
SC	34.5

Growth & Maternal EPDs

CED	BW	WW	YW	MK	TM	CEM	HP	PG30	ST
13.4	0.2	54	76	24	52	5	1.08	0.82	14.4

Intake & Carcass EPDs

DMI	YG	CW	REA	MB	\$COW	FPI	EPI
	-0.4	9	0.63	0.02		63.12	

This is almost the last bull offered in the sale and his quality will tell you how deep the offering is for this sale. For those of you that actually read all these footnotes, I thank you sincerely for your consideration of TJB Gelbvieh to be your bull provider.

## HERD HEALTH PROTOCOL

OCTOBER:

Cows- Bovi-Shield Gold

FP5+L5

Deworm with Safe-Guard

Multi-Min

NOVEMBER/DECEMBER:

Calves: Inforce 3

Ultrabac-7

MARCH:

Calves: Bovi-shield Gold 5

Ultrabac-7

APRIL: (At Weaning)

Cows: Vira-Shield 6+L5

Dewormed with Long Range

MAY:

Calves: Bovi-Shield Golf

FP+L5

Dewormed with Long Range

SEPTEMBER:

Bulls: Vira-Shield 5+L5

Dewormed with Safe-Guard

Heifers: Bovi-Shield Gold

FP+L5

Dewormed with Safe-Guard

OCTOBER:

Bulls: Breeding Soundness

Exam



Lots 61-70:

# REGISTERED FEMALES

## 61 TJB ANISSA 149X 6128E ET

Double Polled | Black(RC) | PB88

DOB: 1/25/2017  
 AGA#: 1407484  
 TATTOO: 6128E

HYEK BLACK IMPACT 3960N  
**CIBS FIRST IMPRESSION**  
 HYEK KIZZY 1521L  
 DCH HILLE M118 MAJESTY  
**TJB TJB ANISSA 913U 149X**  
 TJB ANISSA 913U-ET ET

BW	80
WW	551
YW	668

Growth & Maternal EPDs

CED	BW	WW	YW	MK	TM	CEM	HP	PG30	ST
14.3	-0.5	62	89	29	60	6	0.5	-0.77	15.9

Intake & Carcass EPDs

DMI	YG	CW	REA	MB	\$COW	FPI	EPI
0.005	-0.42	2	0.67	0.02	103.31	69.5	76.57

149X daughter that will be a full sib to bulls selling as Lots 6-8. An opportunity to buy in on one of our best females. Due 3/2/19 to Basin Bonus(AN)

## 63 TJB BLACKCAP 6139E ET

Double Polled | Homo Black | BA50

DOB: 2/1/2017  
 AGA#: 1407493  
 TATTOO: 6139E

POW JETSTREAM 36B  
**TJB SLEEPY 161F ET**  
 BTI MS HELEN B 2081B  
 SITZ TRAVELER 8180  
**KAHN BLACKCAP B042**  
 G A R PRECISION 706

BW	75
WW	597
YW	753

Growth & Maternal EPDs

CED	BW	WW	YW	MK	TM	CEM	HP	PG30	ST
13	0.3	58	89	23	52	9	0.92	2.52	11.9

Intake & Carcass EPDs

DMI	YG	CW	REA	MB	\$COW	FPI	EPI
0.05	-0.16	5	0.35	0.31	82.53	71.31	116.86

Sleepy daughter from Angus cow, B042. She is maternal sib to 823T. Due 2/5/19 to MAR Innovation(AN).

## 62 TJB ANISSA 495B 645D

Homo Polled | Homo Black | BA50

DOB: 9/7/2016  
 AGA#: 1384112  
 TATTOO: 645D

TAU GUNSLINGER 19U  
**DJS DERRINGER 96X**  
 MISS 004-76T  
 CTR CTR SANDHILLS 0065X  
**TJB ANISSA 921U 495B-ET**  
 TJB ANISSA 921U-ET ET

BW	61
WW	512
YW	761

Growth & Maternal EPDs

CED	BW	WW	YW	MK	TM	CEM	HP	PG30	ST
16.4	-1.7	48	70	23	47	9	1.87	2.24	16.3

Intake & Carcass EPDs

DMI	YG	CW	REA	MB	\$COW	FPI	EPI
	-0.19	4	0.37	0.01		61.33	

This female is by another really good female, 495B sired by calving ease specialist, Derringer. Due approximately 3/26/19 to Alberto.

## 64 TJB BLACKCAP 823T 661D ET

Homo Polled | Double Black | BA50

DOB: 9/19/2016  
 AGA#: 1384049  
 TATTOO: 661D

CONNELLY CONSENSUS 7229  
**TAU OUTRIGHT 162A**  
 TAU GUNNISON 5151R  
 JBOB 3303K ET  
**TJB BLACKCAP B042 823T ET**  
 KAHN BLACKCAP B042

BW	72
WW	434
YW	772

Growth & Maternal EPDs

CED	BW	WW	YW	MK	TM	CEM	HP	PG30	ST
13.4	0.4	63	101	24	56	8	3.29	0.38	13.4

Intake & Carcass EPDs

DMI	YG	CW	REA	MB	\$COW	FPI	EPI
0.02	-0.19	24	0.67	0.39	92.67	77.03	125.52

Nice female here by longtime donor, 823T. She is due to Alberto about 4/1/19.

## 65 TJB EVER LADY 663D

Homo Polled | Double Black | BA25

DOB: 9/19/2016  
 AGA#: 1392679  
 TATTOO: 663D

SINCLAIR GRASS MASTER  
**TJB VALERO 342Z ET**  
 TJB VELVET MOON 226M - ET  
 RIVERBEND MILE HIGH 3718  
**THREE TREES EVER LADY U1085**  
 THREE TREES EVERELDA 2889

BW	67
WW	591
YW	705

Growth & Maternal EPDs

CED	BW	WW	YW	MK	TM	CEM	HP	PG30	ST
12.6	-0.4	62	88	24	55	7	3.96	2.62	12.4

Intake & Carcass EPDs

DMI	YG	CW	REA	MB	\$COW	FPI	EPI
-0.013	-0.05	25	0.42	0.58	88.79	80.29	141.7

Valero daughter from a royalty bred Angus female. Due 2/15/19 to Basin Bonus

## 66 674D

Commercial Female

Commercial Valero daughter by commercial Angus cow. Bred to Basin Bonus (Angus) 5/26/2018. Due 3/7/19

SELLING FEMALES



## 67 TJB Miss Entense 6104E

Angus Female

DOB: 2/8/2017

AAA#: 19212666

TATTOO: 6104E

MOHNEN SOUTH DAKOTA 402  
**MOHNEN DEADWOOD 1114**  
 MOHNEN BLACKBIRD 2069  
 H S A F BANDO 1961  
**NUETA MISS ENTENSE 813**  
 BT EVERELDA ENTENSE 53K

CED	BW	WW	YW	MK	\$W
5	1.8	49	92	30	46.74

We purchased some Angus females through our good friends from Beartooth Ranch in 2016. These Angus females selling are the spring calves from those females. Notice the pedigrees in these heifers and see some of the most proven genetics in the Angus breed. Bred to Alberto for Balancer calf due approximately 3/18/19.

## 69 SCC Ms Witch 702E

Angus Female

DOB: 3/18/2017

AAA#: 19221537

TATTOO: 702E

CONNELLY CONSENSUS 7229  
**JAF BCC CONSENSUS185A**  
 BT BEAUTY 233P  
 CONNEALY THUNDER  
**JAF MS WITCH 73W**  
 BT MS WITCH 370P

CED	BW	WW	YW	MK	\$W
10	5	44	83	31	51.06

These last two Angus heifers are the result of an embryo venture we have with Rob Aumueller and John Carrel. We brought the dams of these two heifers home to start flushing after they calved and these are their progeny. The dam of this female is a tremendously balanced Thunder daughter tracing back to the Witch family at Partisover Ranch. Due 2/13/19 to Basin Bonus.

## 68 TJB Georgina 6105E

Angus Female

DOB: 2/9/2017

AAA#: 19212419

TATTOO: 6105E

R B ACTIVE DUTY 010  
**GMAR SUPER DUTY C279**  
 GMAR IMAGE MAKER X306  
 BON VIEW NEW DESIGN 878  
**GMAR NEW DESIGN 6009**  
 GMAR RITO LADY 4015

CED	BW	WW	YW	MK	\$W
5	1.4	62	112	27	57.34

This female came from highly respected Green Mountain Angus in Montana. This heifer has an awesome set of EPD's. She is bred to MAR Innovation to calve 2/5/19.

## 70 JC Everelda Entense 701E

Angus Female

DOB: 1/29/2017

AAA#: 19221086

TATTOO: 701E

S A V RESOURCE 1441  
**PINE COULEE RESOURCE 60C**  
 MW BLACK NELLIE RITA 032  
 PINE COULEE DUKE T703  
**JC EVERELDA ENTENSE 87X**  
 BT EVERELDA ENTENSE 718K

CED	BW	WW	YW	MK	\$W
3	3.3	56	96	26	45.38

The dam of this heifer is a descendant of the famed Sitz Everelda 1905 with a shot of Leachman Right Time as well. This is a big, high performance female. She sells bred to multisire Balancer bulls and calf will be commercial. Due in April 2019.



CHICKAMAUGA, GEORGIA



CHATTANOOGA, TENNESSEE

## TRAVEL INFORMATION

### Chickamauga & Chattanooga

#### SALE DIRECTIONS

From Chickamauga, Georgia take HWY 341 south approximately 4 miles, turn right onto Brotherton Lane. TJB Gelbvieh is the second drive on the left. From Highway 136 take 341 north approximately 2.5 miles, turn left on Brotherton Lane. Keep an eye out for signs on the corner of Brotherton Lane. TJB Gelbvieh is the second drive on the left.

#### AIR TRAVEL

Chattanooga Airport  
*Less than 20 miles from TJB Gelbvieh.*

Hartsfield-Jackson Atlanta International Airport  
 Birmingham-Shuttlesworth International Airport  
 Nashville International Airport  
*All within a two-hour-drive to TJB Gelbvieh.*

#### ACCOMMODATIONS

Econo Lodge Inn & Suites  
 Lafayette, GA | (706) 639-9362  
 7.7 miles from TJB Gelbvieh

Key West Inn  
 Lafayette, GA | (706) 638-8200  
 7.7 miles from TJB Gelbvieh

#### VISIT CHATTANOOGA!

TJB Gelbvieh is located at the foot of Lookout Mountain and only 20 miles from Downtown Chattanooga. In fact, Chattanooga was recently named one of the "Top 45 Places to go" in the World. And it's no wonder. Tucked between the mountains of Southeast Tennessee, along the beautiful Tennessee River, Chattanooga is one of America's most breathtaking cities. While in town, if you're interested in exploring what the area has to offer, we would recommend you stay in one of the many accommodations in Chattanooga. Some sights we suggest are: Incline Railway, Rock City, Tennessee Aquarium, Ruby Falls and Point Park.



This year, we recognize and honor the loss of two dear friends: Dale Taylor (left) and Eulene Matthews (right). Sale days at TJB Gelbvieh will not ever be the same without their presence.





455 Brotherton Lane  
Chickamauga, GA 30707  
(706) 375-6586



[www.TJBGelbvieh.com](http://www.TJBGelbvieh.com)

*It's a*  
**FAMILY  
THING**

**7<sup>TH</sup> ANNUAL BULL SALE**  
SATURDAY, NOV. 3, 2018  
1:00 EST | TJB GELBIEH | CHICKAMAUGA, GA

